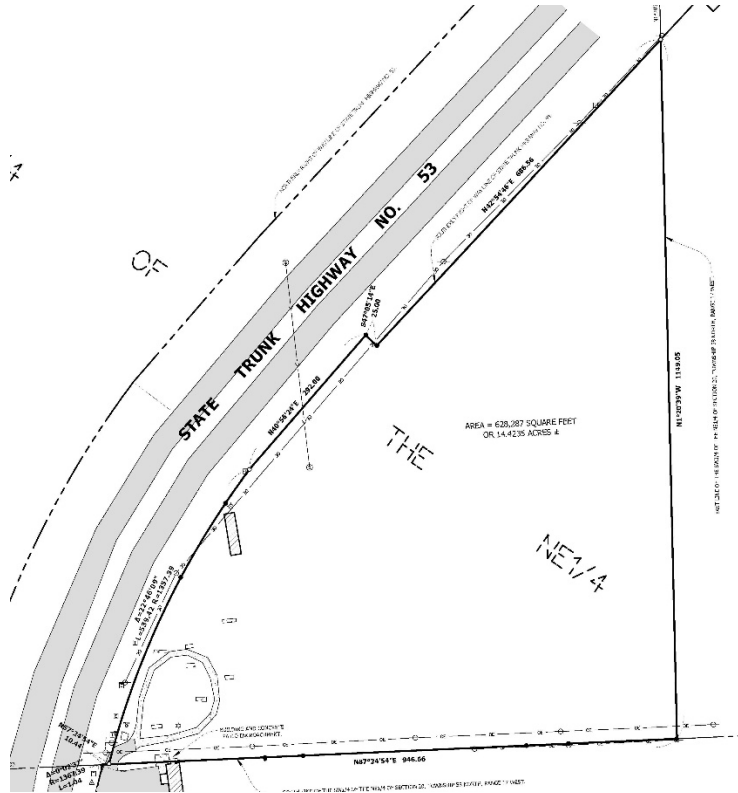


**Development Site**  
**US Highway 53 & Cuyuna Dr.**  
**Midway Township (Virginia), MN 55792**



**Reduced - \$999,500!**  
**(formerly \$1,750,000)**

- **14.4 Acre Development Site**
  - **B-2 Community Business District Zoning**
  - **Engineered Fill in Place**
  - **15,000 Average Vehicles Per Day (2017 data)**
  - **Extensive US Highway 53 Frontage (+/- 1,600')**



2009 London Rd., Suite 101 Duluth, MN 55812 Phone: 218/722-0357

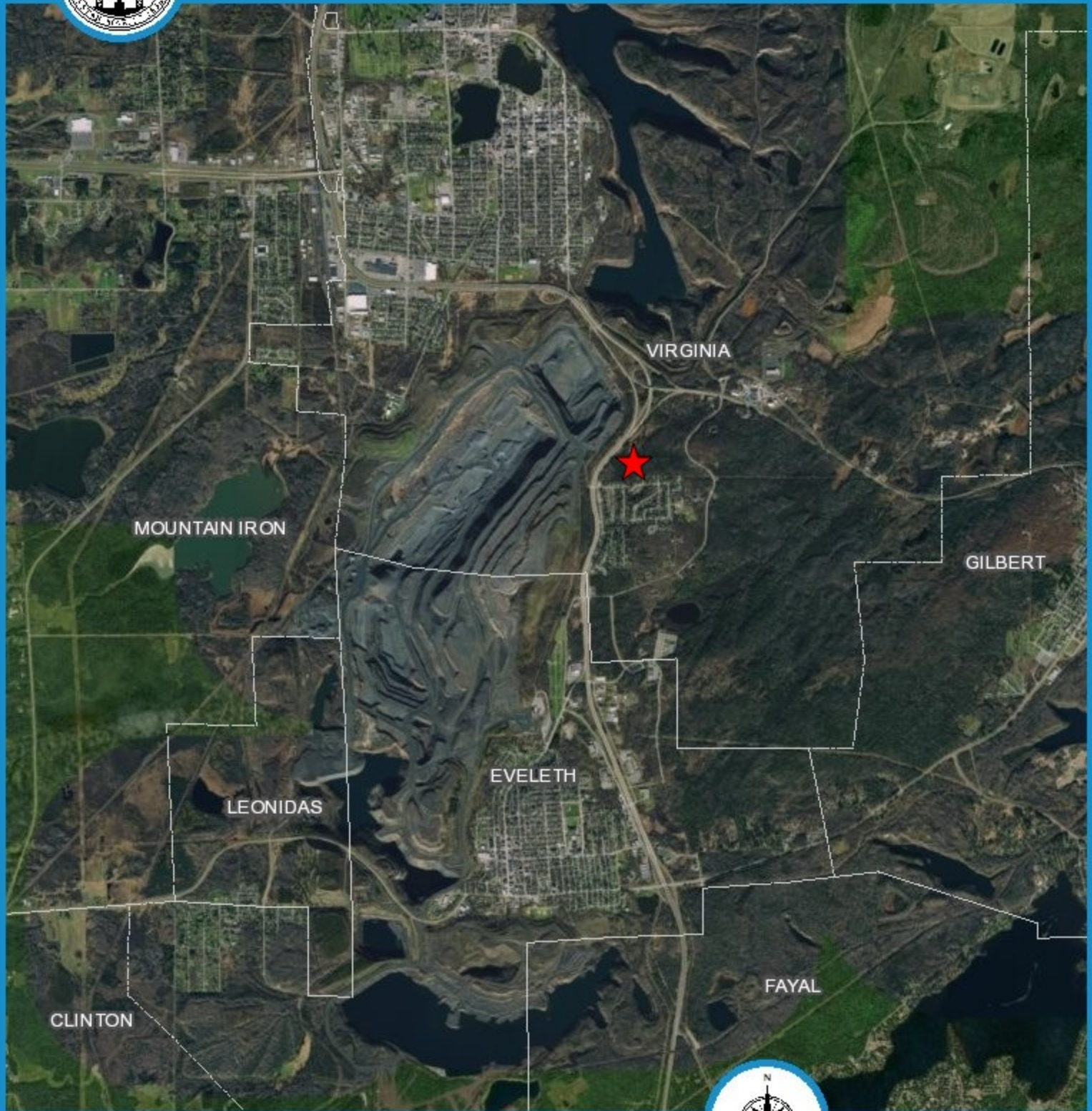
[www.holappa.com](http://www.holappa.com)

This information is deemed reliable, but not guaranteed.



# County Land Explorer

St. Louis County, Minnesota



Bridgeview Dev.

default author



County Land Explorer  
St. Louis County [www.stlouiscountymn.gov/explorer](http://www.stlouiscountymn.gov/explorer) Minnesota

### Disclaimer

This is a compilation of records as they appear in the Saint Louis County Office affecting the area shown. This drawing is to be used only for reference purposes and the County is not responsible for any inaccuracies herein.



Map created using County Land Explorer  
[www.stlouiscountymn.gov/explorer](http://www.stlouiscountymn.gov/explorer)

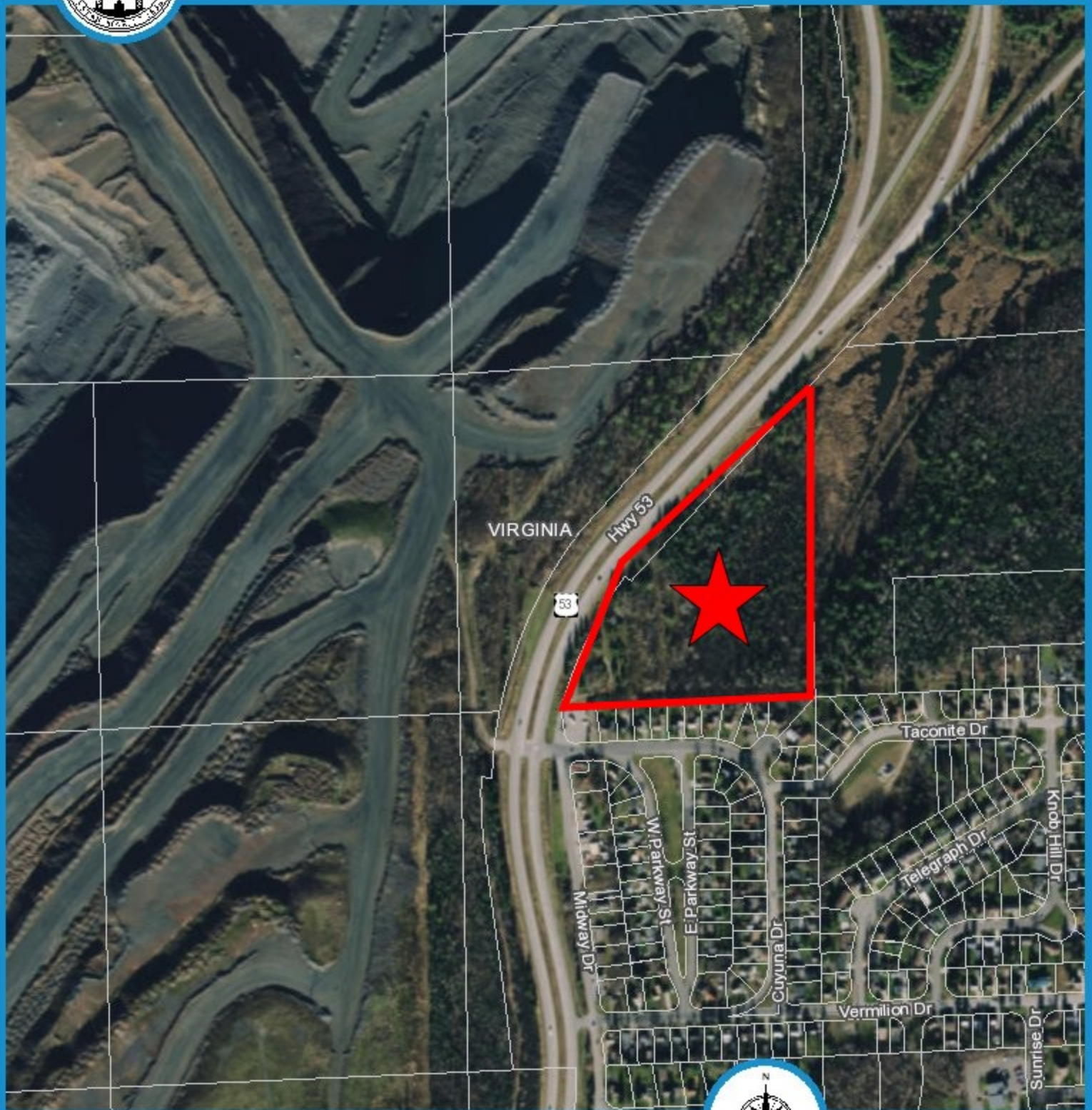
© Copyright St. Louis County Minnesota | All Rights Reserved Printed: 4/15/2019





# County Land Explorer

St. Louis County, Minnesota



Bridgeview Dev. (2)

default author



County Land Explorer  
St. Louis County [www.stlouiscountymn.gov/explorer](http://www.stlouiscountymn.gov/explorer) Minnesota

### Disclaimer

This is a compilation of records as they appear in the Saint Louis County Office affecting the area shown. This drawing is to be used only for reference purposes and the County is not responsible for any inaccuracies herein.



Map created using County Land Explorer  
[www.stlouiscountymn.gov/explorer](http://www.stlouiscountymn.gov/explorer)

© Copyright St. Louis County Minnesota | All Rights Reserved Printed: 4/15/2019