

Retail/Office Building
323 N. Central Avenue
Duluth, MN 55807



For Sale - \$299,000

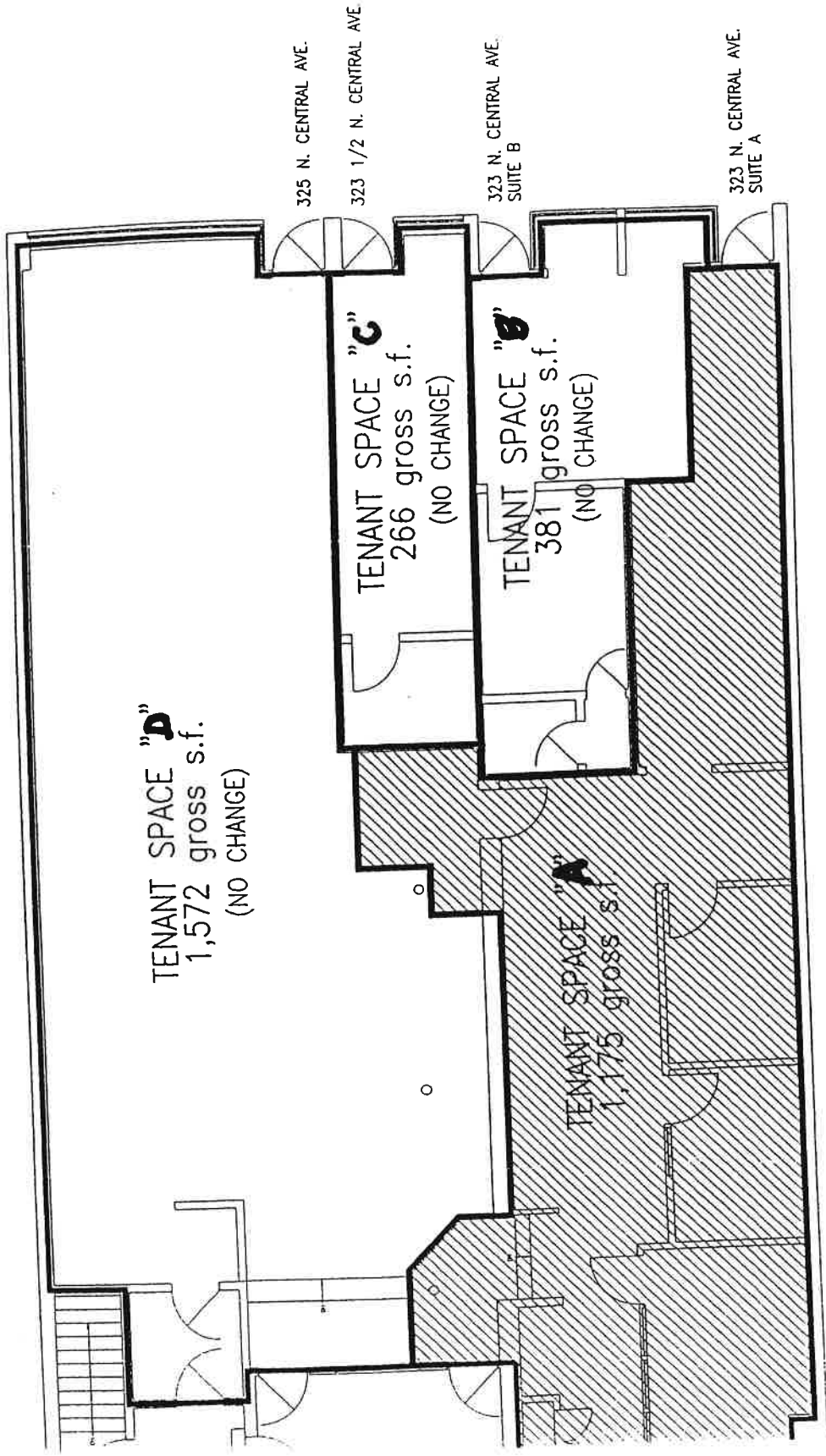
- **4,000 square feet plus full basement**
 - **Four distinct tenant spaces**
 - **Private Bathrooms in each space**
 - **Located near the new West Theatre, Park State Bank, Mr. D's, Super One and many other retailers**
- **High visibility location N. Central Avenue**
 - **49' x 125' lot**
 - **Off street parking in the rear, on street parking in front**



2009 London Rd., Suite 101 Duluth, MN 55812 Phone: 218/393-1490
www.holappa.com

This information is deemed reliable, but not guaranteed.





2
A1
KEY PLAN
SCALE: 1/16"=1'-0"

